

The Porchlight

THE OFFICIAL NEWSLETTER OF THE BETHANY HOUSING AUTHORITY

APRIL 2024

VOL. 47



REGULAR OFFICE HOURS:

Monday - Thursday
8:00 a.m. - 4:00 p.m.

Friday
9:00 a.m. - 12:00 p.m.

Closed the last day of the month.

IN THIS ISSUE

OFFICE HOURS
CALENDAR
APRIL BIRTHDAYS
HOUSING AUTHORITY NEWS
CHECK YOUR MOOD
APRIL 8TH SOLAR ECLIPSE
CREAMY CUCUMBER PASTA SALAD
SPRING WORDSEARCH
SPRING CROSSWORD



The Porchlight

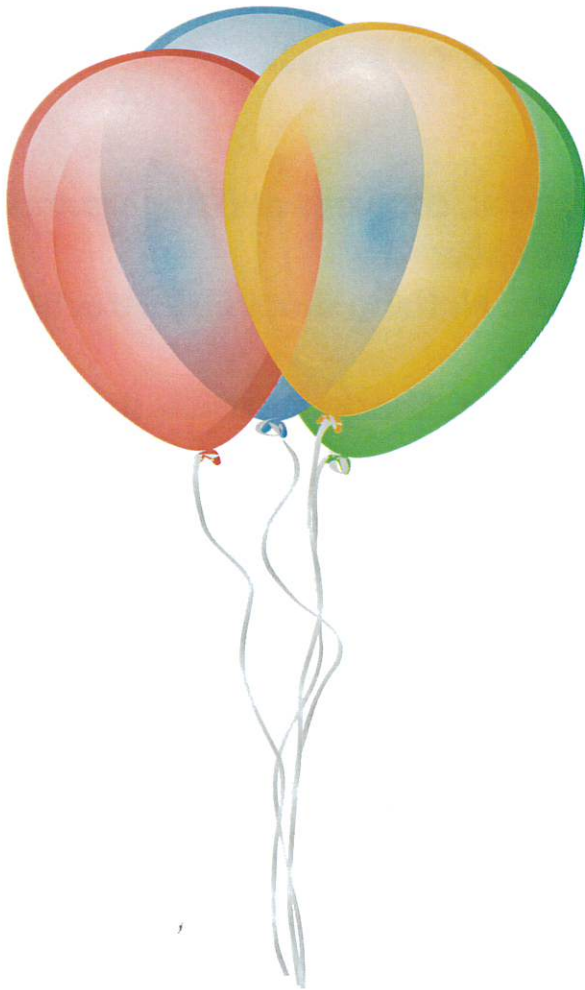


April 2024



Sunday	Monday	Tuesday	Wednesday	Thursday	Friday	Saturday
	April Fool's Day Last Quarter 1	2	Coffee Klatch 9:00 a.m. - 10:00 a.m. 3	4	5	6
7	New Moon 8	9	Coffee Klatch 9:00 a.m. - 10:00 a.m. 10	11	12	13
14	First Quarter 15	16	Coffee Klatch 9:00 a.m. - 10:00 a.m. - 17	18	19	20
21	Earth Day 22	Passover Begins Full Moon 23	Coffee Klatch 9:00 a.m. - 10:00a.m. 24	25	26	27
28	29	Office Closed 30				

APRIL BIRTHDAYS!!



Dora 4/1

William 4/6

Duane 4/7

Stassie 4/15

Maivus 4/24

Bethany Housing Authority News

Due to the reoccurring problems with housekeeping issues that are resulting in infestations, we will be conducting quarterly inspections of all units. We will begin with the first inspection on **Wednesday, April 17th at 9 a.m.**

Our Lease clearly states, "Residents are responsible for keeping your units safe, decent and sanitary." This protects the property and helps prevent situations that promote infestations of roaches, mice, and other pests.


You are responsible for contacting the management office if you suspect an infestation of roaches or bed bugs.

Lease rules and regulations,

- A. Walls should be clean, free of dirt, grease, holes, cobwebs and fingerprints.
- B. Floors should be clean, clear, dry and free of hazards.
- C. Ceilings should be clean and free of cobwebs. Nothing should be attached to the ceiling, no stickers, lamps, plants or lights.
- D. Windows should be clean and not fastened shut. Shades or blinds should be intact.
- E. Woodwork should be clean, free from dust, gouges or scratches.
- F. Doors should clean, free of grease and fingerprints. Doorstops should be present. Locks should work.
- G. Heating units should be dusted and access uncluttered.
- H. Trash should be disposed of properly and not left in the unit. It must be properly bagged and placed in dumpsters.
- I. Entire unit should be free of rodent or insect infestation.

Having an infestation is not grounds for eviction; failure to notify management and/or cooperate with treatment is a material lease violation.

Do you feel like you've lost your zest for life?

Take a look at the checklist below and
 **check your mood**

- Have you lost interest in activities you previously enjoyed?
- Have you recently lost a loved one?
- Have you experienced feelings of sadness or grief lasting longer than two weeks?
- Have you experienced a loss of energy or feeling tired all the time?
- Do you have a chronic health condition?
- Have you had a recent health diagnosis?
- Have you experienced changes in appetite?
(eating too much or too little)
- Have you experienced a change in sleeping patterns?
(sleeping too much or too little)
- Have you had trouble concentrating or thinking clearly?
- Do you feel hopeless, like you've lost control of your life?
- Do you feel isolated or lonely?
- Are you the primary caregiver for a friend or loved one?



If you checked the box to any of these questions and you would like to talk to someone, Senior Life Solutions can help answer questions confidentially. We believe that quality of life does not have to stop as we age. Contact us today, we may be able to help.

(660) 425-0350



APRIL 8, 2024 TOTAL SOLAR ECLIPSE

10 THINGS THAT HAPPEN DURING A SOLAR ECLIPSE

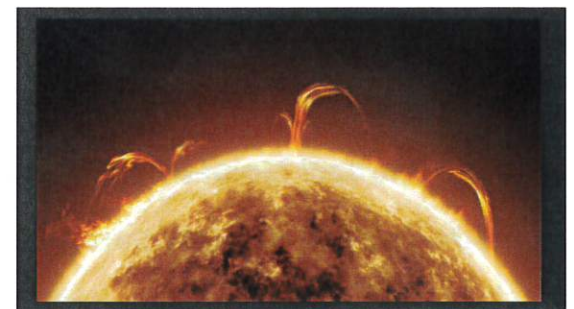
1. BAILY'S BEADS

While viewing a solar eclipse, you might notice a sliver of light around the moon's edge that appears beaded, like a necklace. This phenomenon is known as "Baily's Beads". It is named after the astronomer Francis Baily, who described the effect in 1836, it is caused by sunlight interacting with the moon's uneven surface.



2. SOLAR PROMINENCES

Solar prominences, also known as filaments, are huge and magnetic field structures that arise from the sun's surface, also known as solar flares. Normally, we would not be able to see these protruding from our stand point on Earth. But during an eclipse, they may be visible behind the moon, appearing like petals on a flower.



3. PLUNGING TEMPERATURES

Temperatures can drop quickly as the moon covers the sun. How much it drops depends on the location, time of year and type of eclipse. Most places see drops of around 5 to 10 degrees during a total eclipse, though the plunge can be greater. One newspaper in 1834 reported a change of 28 degrees.

4. CHANGING WINDS

Along with the temperature drop, regions experiencing an eclipse can expect a change in wind direction. First the wind dies down as the moon gets closer to blocking the sun. After the moon reaches peak coverage, the wind starts to kick back up, often blowing in a different direction. This phenomenon occurs with total, annular and even partial eclipses.



5. CONFUSED ANIMALS

When the sky suddenly becomes dark in the middle of the day, animals can become very confused. Twilight animals, like cicadas and crickets, might start chirping their evening song. Cows and horse may begin bedding down for the night, while birds return to their roost.



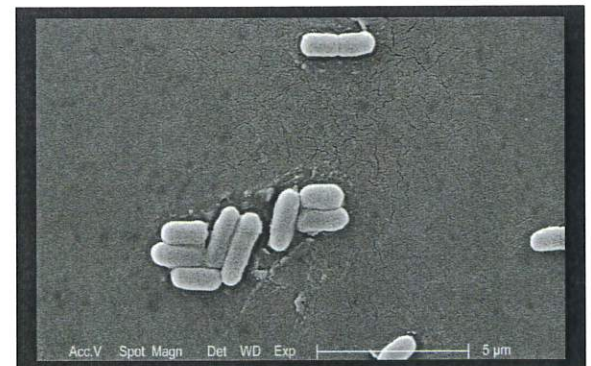
6. SCRAMBLED RADIO WAVES

Both total and annular eclipses mess with certain radio wave frequencies, and nobody is quite sure why. Scientists suspect it might have something to do with the way the sun interacts with Earth's ionosphere, which is known to fluctuate in response to things like solar flares and solar storms. On April 8, 2024, citizen scientists and ham radio enthusiasts across North America will be poised to collect more data on how eclipses scramble these transmissions.



7. MIXED-UP MICROBES

Even microorganisms could be susceptible to a solar eclipse's weird vibes. A 2011 study of bacteria growing on laboratory petri dishes during a total eclipse in India found that the microbes became smaller and differently shaped near the peak of the eclipse. However, these results have not yet been replicated.



8. WEIRD SHADOWS

As an eclipse passes overhead, most eyes will be glued to

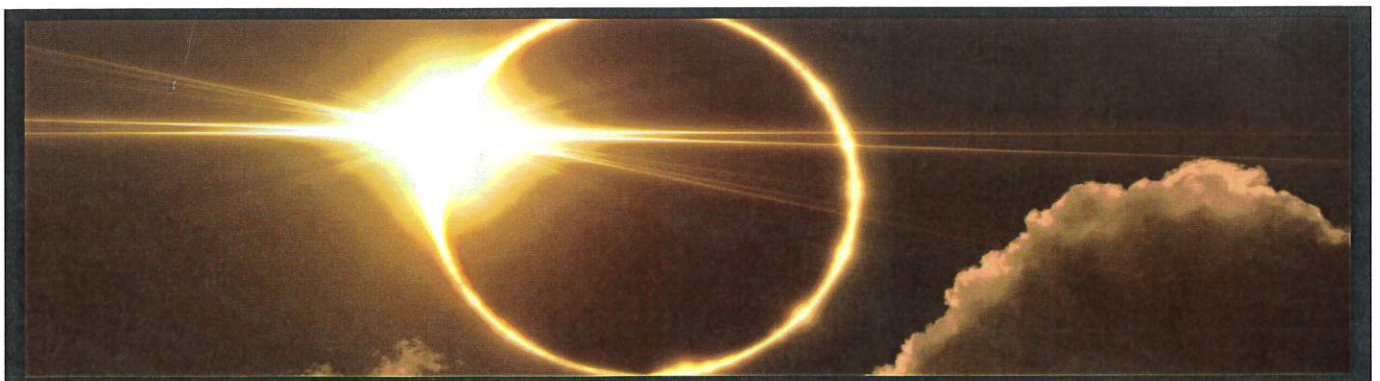
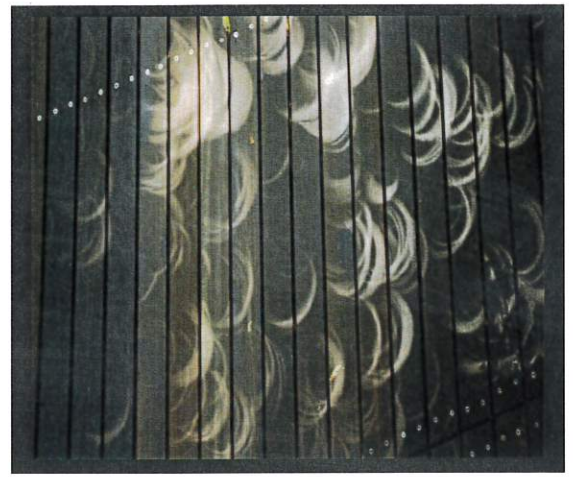
the sky. But take a moment to look at the ground. The shadows made by trees and other objects that cause a “pinhole” effect will be dappled with tiny crescents. During the peak of an annular eclipse, you’ll see little rings of light everywhere. These eclipse shadows also occur during partial eclipses and the effect can be quite beautiful.

9. SHADOW BANDS

Seconds before an eclipse reaches totality, wavy stripes of light and dark might appear on solid-colored surfaces. Kind of what it looks on the bottom of a swimming pool. These shadow bands are a bit of a scientific mystery, astronomers still don’t know exactly what causes them or why they only sometimes appear. Some scientists hypothesize that the bands may be a manifestation of the rippling distortions of Earth’s atmosphere. But whatever they are, they’ve been well documented. Records of them date as far back as the ninth century.

10. VISIBLE STARS AND PLANETS

During a total solar eclipse, the moon blocks out enough of the sun’s light for stars and planets to appear in the sky. Only the brightest of these will be visible, however, and which ones show up will depend on Earth’s position at the time. For example, during this 2024 total eclipse, you may be able to see Venus and Jupiter. Unfortunately, it won’t be dark enough for this to happen during an annular eclipse.





CREAMY CUCUMBER PASTA SALAD

Prep time: 14 minutes

Ingredients:

1 cucumber
½ lb. medium sized pasta such
as penne or rotini
½ white onion

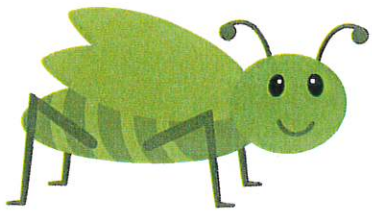
Dressing:

½ cup sour cream 2 tablespoons fresh dill
½ cup mayonnaise 2 tablespoons white vinegar
1 teaspoon sugar pepper to taste
½ teas. Salt

Instructions:

1. Combine all dressing ingredients in a small bowl and mix well.
2. Thinly slice onion and place in a bowl of cold water. (see note)
3. Cook pasta al dente according to package directions. Run under cold water to stop cooking.
4. Cut cucumber in half lengthwise and remove seeds using a spoon. Slice into thin slices.
5. Toss all ingredients in a large bowl. Let sit at least 40 minutes before serving.

Note: Soaking the onions is optional but it takes a bit of the “bite” out of the onion.



Spring Word Search



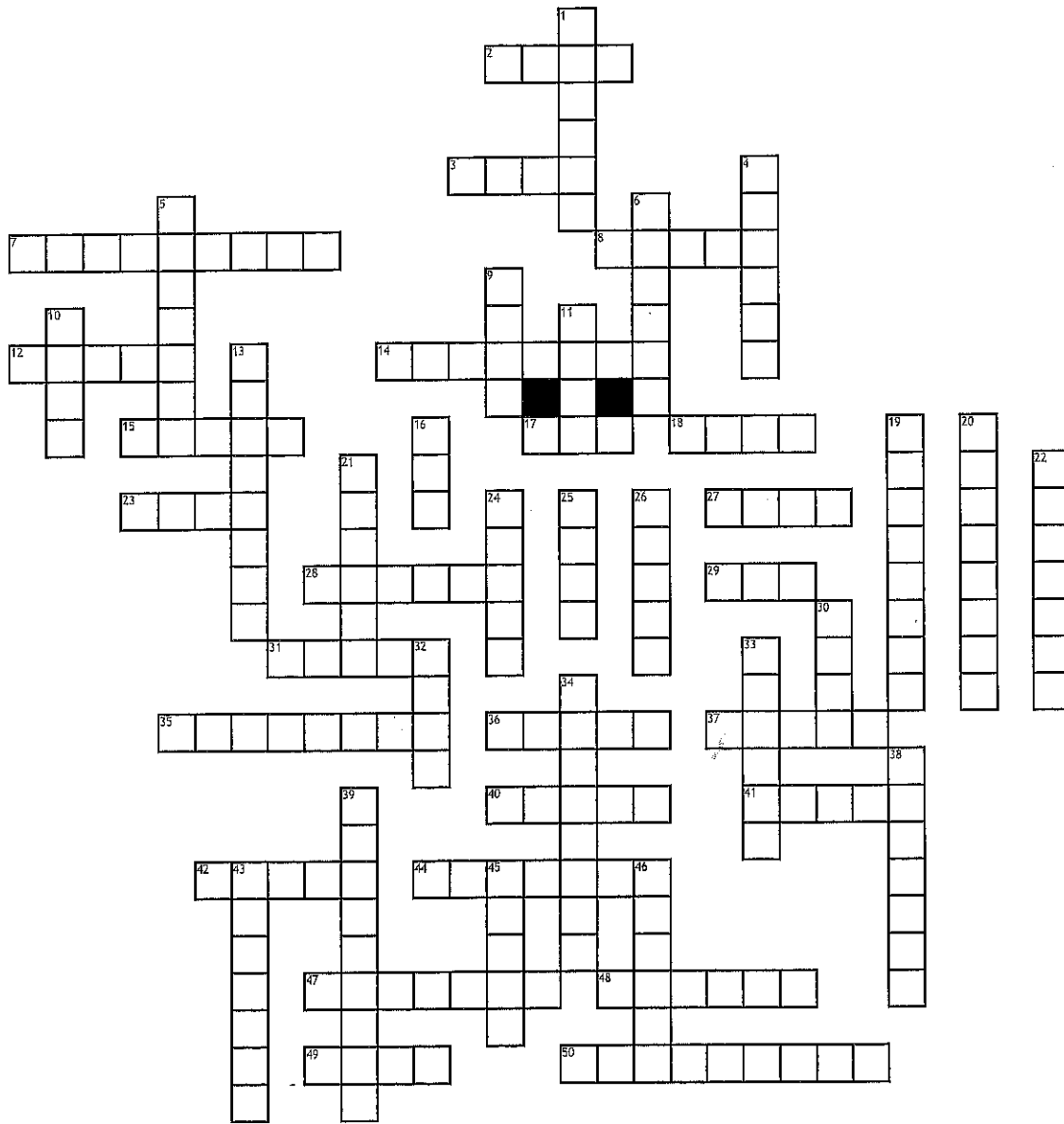
G C G M Z C P S T S C N X T D N V M I C
 G O W T W B Q Z H Y H V S N C W I F S O
 N Q R I G D B P E F A P N E K S B Q G O
 Y U C D T H U H G Q R P N E L L R J M P
 I B I N Z Y K O E I D Y J U O D Z B P W
 F Z T M A P V L N S A W P O G I D M P J
 M O D S I T N G W V D W M N P I F U P I
 X H U L U R H H X V L R S D I L I R P A
 E R P W A C Q L I Y Y C I U A G P M W Y
 K F O I Y O O U A G R N Q B U K E O Z R
 Q U N B G G B R I I J V Q V D B Y N V O
 R M M N R A S F C L I X Y W F P M G J J
 M T V A E T R D G C S G S L Q B S W M S
 I F S Y F S E D X R T W T I T K I C A W
 Z S P J H L T E E V L B C D O G D R R R
 M R I K F S V W E N J O E O K S P B C H
 R X L R V T O U S E E D S F K W Y I H E
 U M U N A L K J E S V H N F S Y A L P O
 T H T G F L L F W O B N I A R W M Y A W
 Z D U L J E S E F Y X R G D R D N C X R

SPRING
 GRASS
 RAINBOW
 PLAY
 APRIL
 INSECTS
 GARDEN

FLOWERS
 PUDDLES
 DAFFODIL
 BLOOM
 MAY
 NEST

RAIN
 TULIPS
 CROCUS
 MARCH
 BIRDS
 SEEDS

Spring Break



Across

2. What you call a young cow
 3. A plant grows from this part
 7. As a caterpillar turns into a
 8. Something we drink every day
 12. The 3rd month of the year
 14. The warm rays from the sun
 15. What we mow in our yard
 17. What insect likes flower pollen
 18. What we call air moving in the trees
 23. You put a light _____ in a lamp
 27. What is a very young child called
 28. The first thing you do in the morning
 29. What a chicken lays
 31. The 4th month of the year
 35. A device that shields you from rain
 36. When ice melts it _____
 37. April 1st is called April _____ Day
 40. Another name for a rabbit

41. The plant we live on
 42. If you mix blue and yellow you get
 44. The year is divided into 4 _____
 47. Name the flowery part of a plant
 48. What we do when we take food to a park
 49. What do you call a young horse
 50. The light show from stormy clouds
- ## Down
1. Where rain comes from
 4. A place where vegetables grow
 5. What we call wind, sun, storms, rain
 6. A spring holiday
 9. Where birds sleep
 10. The opposite of cool
 11. A paper diamond shape that flies on a string
 13. Summer game using balls and bats
 16. Low misty clouds that touch the ground

19. What do you call a young duck
 20. One of the first yellow flowers of spring
 21. A light rail fall is called a _____
 22. When a chick comes out of an egg its _____
24. The 5th of May - Spanish number
 25. What we call a baby sheep
 26. What do you call a baby Chicken
 30. Dirt in a garden is called _____
 32. The buds on a tree turn into a
 33. Reddish-blue color near purple
 34. What you wear in the rain
 38. The noise lightning makes
 39. A grassweed with a yellow flower
 43. The bow of color created by rain and sun
 45. The day set aside for planting trees
 46. The 1st season of the year

Answer Key:

Across

2. calf
3. seed
7. butterfly
8. water
12. march
14. sunlight
15. grass
17. bee
18. wind
23. wick
27. baby
28. awaken
29. egg
31. April
35. umbrella
36. thaws
37. fools
40. bunny
41. earth
42. green
44. seasons
47. blossom
48. picnic
49. foul
50. lightning

Down

1. Clouds

Down con't

4. garden
5. weather
6. easter
9. nest
10. warm
11. kite
13. baseball
16. fog
19. duckling
20. daffodil
21. shower
22. hatched
24. cinco
25. lamb
26. chick
30. soil
32. leaf
33. indigo
34. raincoat
38. thunder
39. dandelion
43. rainbow
45. arbor
46. spring