

The Porchlight

THE OFFICIAL NEWSLETTER OF THE BETHANY HOUSING AUTHORITY

JUNE 2024

VOL.49



REGULAR OFFICE HOURS:

Monday – Thursday
8:00 a.m. – 4:00 p.m.

Friday
9:00 a.m. – 12:00p.m.

Closed the last day of the month.

IN THIS ISSUE

OFFICE HOURS
CALENDAR
JUNE BIRTHDAYS
AFTER HOURS EMERGENCY PROCEDURE
HEALTHY HOMEMADE FRUIT POPSICLES
A FATHER'S DAY POEM
JUNE CROSSWORD PUZZLE
FATHER'S DAY CROSSWORD
CROSSWORD ANSWER KEY





The Porchlight



JUNE 2024



SUNDAY	MONDAY	TUESDAY	WEDNESDAY	THURSDAY	FRIDAY	SATURDAY
						1
2	3	4	Coffee Klatch 9:00 a.m. - 10:00 a.m. 5	New Moon 6	7	8
9	10	11	Coffee Klatch 9:00 a.m. - 10:00 a.m. 12	13	Flag Day  First Quarter 14	15
FATHER'S DAY  16	17	18	Coffee Klatch 9:00 a.m. - 10:00 a.m. Juneteenth 19	Summer Begins 20	Full Moon 21	22
23	24	25	Coffee Klatch 9:00 a.m. - 10:00 a.m. 26	27	Last Quarter 28	30

June Birthdays!!



Lincoln	6/1	Braden	6/2
Avona	6/8	Austin	6/9
Janice	6/17	Hunter	6/17
Jennifer	6/17	Julie	6/17
Phronsie	6/19	Vickie	6/20
Selena	6/20	Waylon	6/26
Darlene	6/26		

**HAPPY
BIRTHDAY!!**





Maintenance phone number for after-hours emergencies

660-373-1801

Outside of regular office hours, please call the number above for maintenance.
During office hours, this number is not operational.

Office Hours:

Monday - Thursday 9:00 a.m. - 4:00 p.m., Friday 9:00 a.m. - 12:00 p.m.

Closed last working day of the month

During office hours, still call the main line, (660) 425-3349, for maintenance.

An emergency is considered any condition which poses a serious threat to the life, health, or safety of residents, staff, or general public. Also, any issue which could cause serious structural or systems damage to the property if not addressed within 24 hours.

Examples of emergencies

- ☎ Fire – **Call 911**
- ☎ Gas Leak – **Call 911**
- ☎ Major structural damage (for example, damage from a storm) that makes your unit unsafe – **Call 911**
- ☎ Stopped up toilet which threatens to overflow, turn water off at shutoff valve located near the base of the toilet. Calls after 8:00 p.m. will be completed the following day.
- ☎ Major water leaks, turn off water under kitchen sink until staff arrives.
- ☎ Furnace failure, when temperature inside of your apartment falls below 60°F.
- ☎ Refrigerator failure, normal emergency hours 9:00 a.m. – 5:00 p.m. on Saturday & Sunday, **if you have insulin in your fridge necessary for your medical care, you can call outside of those hours.**

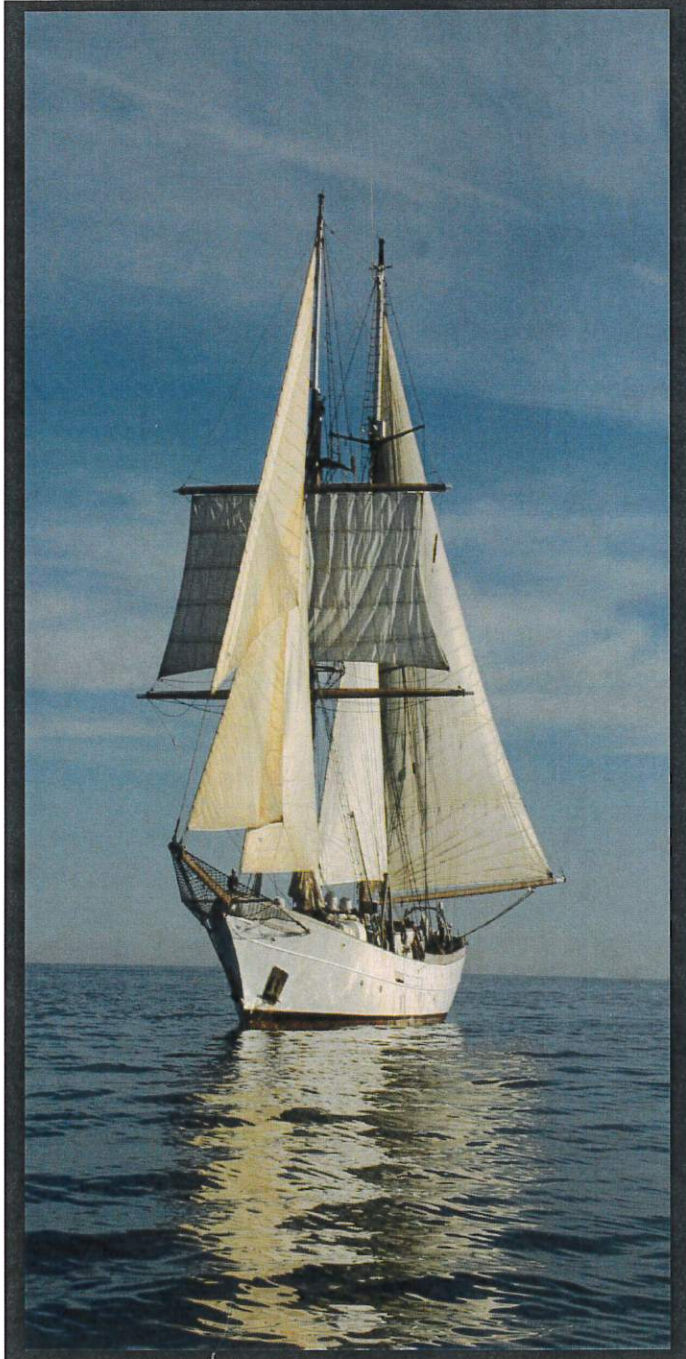
If you are locked out of your apartment and need maintenance to let you in, it's a **\$30** fee. Housing Authority guidelines do not consider air conditioning to be essential unless you have a medical condition documented by your doctor that is in the office.

Do not call staff members' personal phone numbers. Use the number provided here.

When leaving a message, be clear and provide an explanation regarding the issue.

Staff will respond to your call and determine if your situation qualifies as an emergency. Non-emergency calls will be addressed the next regular business day during normal hours of operation.

A TRIBUTE TO MY DAD



*Who is that man with the gentle face,
Who in his youth kept a hectic pace,
To provide for his family all that he
could,*

*Who is that man so giving and good?
Who is that man with the ready smile,
Who always took time to sit for a while?
He was there when his family needed
him there,*

*Who is that man with the gray in his
hair?*

*Who is that man who encouraged us all,
And helped us up when we took a fall,
Spending a lifetime extending his hand,
Who is that kind, compassionate man?*

*Who is that man who we all adore,
The man who these words of devotion
are for?*

*I'll tell you with all of the love that I
can,*

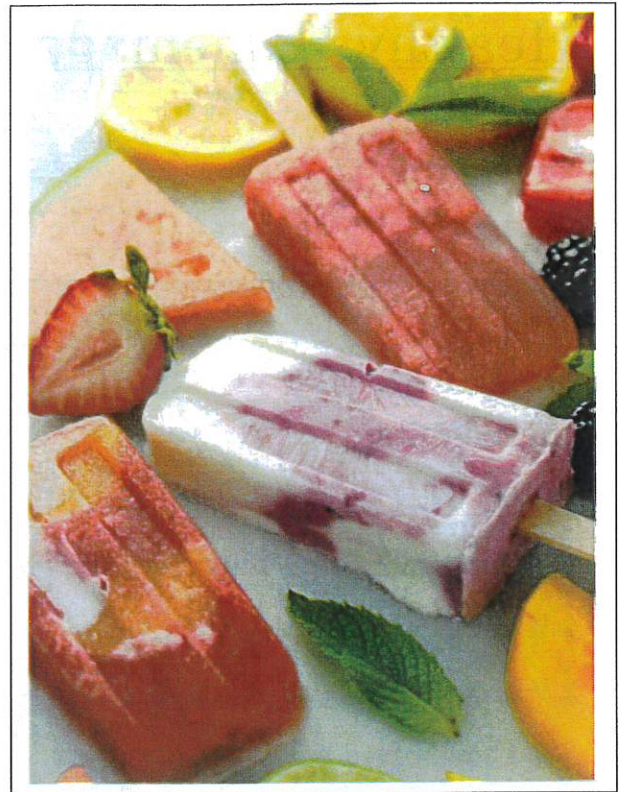
*"My Dad" is that truly exceptional
man!*

Healthy Homemade Fruit Popsicles

Ingredients:

Peach Strawberry Yogurt Popsicles

- 3 Cups of strawberries, pureed to 1 ½ cup
- 3 Cups peaches, peeled and sliced, pureed to 1 ½ cup
- 2 Tablespoons honey, divided
- 2/3 cup vanilla Greek yogurt



Things you will need: Blender, Popsicle molds.

Peach Strawberry Yogurt Popsicles

Instructions:

1. In a blender or using a blender, puree strawberries with four teaspoons honey then set aside. Clean blender, puree sliced peaches with two teaspoons of honey, set aside.
2. Layer the popsicles as follows; 2 teaspoons strawberry puree, 1 teaspoon yogurt, 2 teaspoons peach puree and repeat. Make a fruit puree your last layer.
3. Tap the mold on the counter to make sure all of the layers settle. Use a small spoon to drag vertically from the bottom to the top of the mold a few times to create a swirled pattern.
4. Gently tap the molds on the countertop to remove any air bubbles. Insert the popsicle sticks, and then freeze for at least 6 hours, or overnight.

Healthy Homemade Fruit

Popsicles

Ingredients:

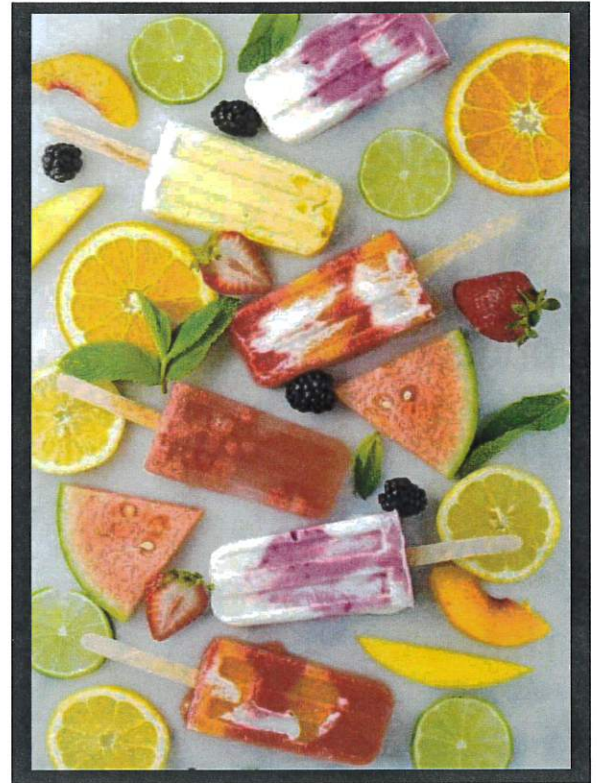
Blackberry Lemon Popsicles

2/3 Cup lemon juice, plus zest from lemons

2 ½ cups vanilla Greek yogurt

2 ½ Cups blackberries

2 ½ Cups mixed berry Greek yogurt



Blackberry Lemon Popsicles

Instructions:

1. In a medium sized bowl, whisk together lemon juice, zest, and vanilla yogurt, set aside.
2. Puree blackberries and mixed berry yogurt, set aside.
3. Layer the popsicles as follows; 1 Tablespoon lemon, 1 Tablespoon blackberry, repeat. Swirl layers if desired.
4. Gently tap the molds on the countertop to remove any air bubbles. Insert the popsicle sticks, and then freeze for at least 6 hours, or overnight.

Storm

Lightning

warning

puddles

Thunder

Weather

rivers

Clouds

Windy

Storm

damp

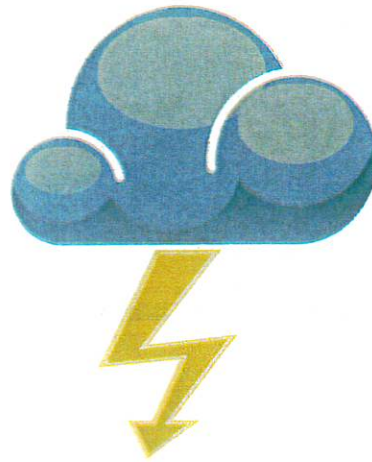
Snow

Hail

Rain

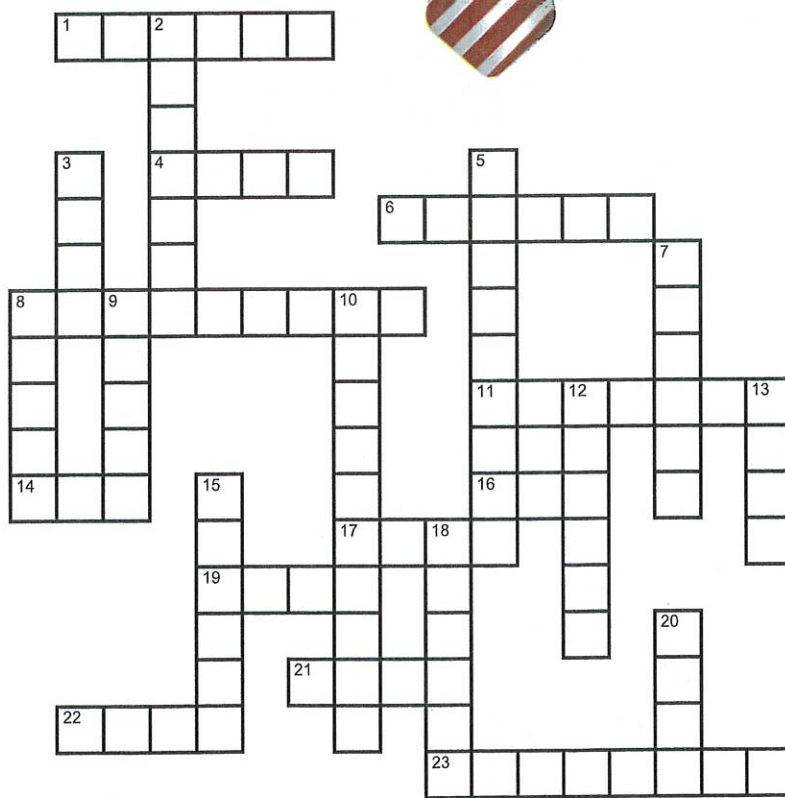
Sun

Sky



S X G F Y W Y S G B W Z E L G O R D E K V B M W
L U X J J E T M V W B K E F Q M O E S G Y G D L
C L W Q S X N S N A E G Q P I Z L K B H G L U L
P N D M Q L A Y W R A H R V F L N E U E M C F Q
N X R X S G I T I N T C E U E E L I B R Z T T M
I Q T R H K C S X I J Y H N A M Z W O Z R T O Q
W K W D H N S C K N O N T G V D A T V Q G P M T
J L T J A N D P N G A E A E A T S W F T L M H O
N O E Z X G U L U R M F E S B O D K C P Q U M V
Q J X A K C O N I V P G W B H L Q B A I N O X L
L Z Z T P X L R N A D R C B A R Z Y W D B B S B
V S G G X P C G X Q H A Y E S A Y M E Y W P U B
W A V C M A S N F Q A E M E M Q L R K S N S V A
P A C H E J S C G C L A A P L U U R L D E H W I
P J J E T Y P N R N P V U U Y L D T E B L H O E
M I M C L M K Z O B Z E P M G R C F K P E Y L Q
S C R O C I O J C W V D S J F M Q E N G G T C N
R I M E E N G H K D B N K Y T T W A Z A Y M Y I
E G F N I U M H Y S E L D D U P G J D I K P G A
V E S D R S Y Y T D F J B I N D Y D B F E E K R
I N Z X C G D Y P N Q K F P Y P R V Y T I G Q G
R Y A U Y R N W Y K I C Z O K D Q Z M R C N I Y
A K K K R T I P S V E N B K W K A M Y O W F U Y
R S N H A K W D N O K K G N I W J Y P M T S O A

Happy Father's Day



ACROSS

1. Male parent.
4. Hallmark specialty: greeting ____.
6. Physically and mentally robust.
8. Male head of the family.
11. Recreational activity for some fathers.
14. Another name for father.
16. Male offspring.
17. Token of appreciation.
19. Affection and devotion.
21. Month in which Father's Day is celebrated.
22. Loud explosive sounds and also an informal term for dad.
23. Female offspring.

DOWN

2. Source of wisdom and guidance.
3. Biggest of the Three Bears.
5. Might be served in bed on Father's Day.
7. Closeknit group of relatives
8. Feeling of satisfaction and fulfillment.
9. Father's Day is on the ____ Sunday of the month.
10. Brave and determined.
12. Day of the week for Father's Day.
13. Popular sport for some fathers.
15. Beliefs and principles that are important
18. Companion and confidant.
20. Superlative form of good.

Best	Courageous	Family	Friend	June	Patriarch	Son	Teacher
Breakfast	Dad	Father	Gift	Love	Pops	Strong	Third
Card	Daughter	Fishing	Golf	Papa	Proud	Sunday	Values

Father's Day

Crossword

SOLUTION

