

The Porchlight

THE OFFICIAL NEWSLETTER OF THE BETHANY HOUSING AUTHORITY

MAY 2024

VOL. 48



REGULAR OFFICE HOURS:

Monday – Thursday
8:00 a.m. – 4:00 p.m.

Friday
9:00 a.m. – 12:00 p.m.

Closed the last day of the month.

We will be closed Tuesday the 14th
through Thursday the 16th for training.
We will be closed Monday the 27th in
observance of Memorial Day.

IN THIS ISSUE

OFFICE HOURS
CALENDAR
MAY BIRTHDAYS
HOUSING NEWS
HEALTH FAIR
A MOTHER'S LOVE POEM
SUGAR FREE STRAWBERRY
PRETZEL SALAD
MOTHER'S DAY WORD SEARCH
MEMORIAL DAY CROSSWORD
CROSSWORD ANSWER KEY



The Porchlight



MAY 2024



Sunday	Monday	Tuesday	Wednesday	Thursday	Friday	Saturday
			Coffee Klatch 9:00 a.m. - 10:00 a.m. Last Quarter I	2	3	4
Cinco De Mayo 5	6	New Moon 7	Coffee Klatch 9:00 a.m. - 10:00 a.m. 8	9	10	11
Mother's Day 12	13	14	Coffee Klatch 9:00 a.m. - 10:00 a.m. - First Quarter 15	16	17	18
19	20	21	Coffee Klatch 9:00 a.m. - 10:00a.m. 22	Full Moon 23	24	25
26	Memorial Day 27	28	Coffee Klatch 9:00 a.m. - 10:00 a.m. 29	Last Quarter 30	31	



MAY BIRTHDAYS

Shirley **5/10**

Terry **5/14**

Betty **5/15**

Chris **5/22**

Patrick **5/24**

Damani **5/24**

Joseph **5/24**

Joseph **5/31**

Housing News

If you own a pet, this is a reminder that the pet policy in our Lease clearly states, "Dogs and cats are not permitted to run loose."

"Pet waste must not be allowed to accumulate."

"Owner is responsible for proper disposal of pet waste."

"Pet owner is responsible for disposing of waste."

"Resident shall dispose of waste by placing it in a plastic bag, sealing the bag and delivering it unbroken to the dumpster or trash receptacle."

"Dog and cat owners are responsible for the appropriate disposal of pet waste in a safe and sanitary manner as it occurs."

"Improper disposal of pet waste is a lease violation and may be grounds for eviction."

It has come to our attention there are dogs being permitted to run loose and poop wherever they want and it is not being cleaned up.

As stated above this is a lease violation and may be grounds for eviction. Please do not allow this to continue. Be respectful of your neighbor/s who may or may not have a pet and who may not wish to walk out their door to piles of your pets waste.

"Animals shall be maintained so as not to be a nuisance or threat to the health or safety of neighbors, BHA employees, or to the public by reason of noise, unpleasant odors, or other objectionable situations."

Harrison County Community Hospital **HEALTH FAIR**

Save on Wellness Lab Tests!

JOIN US!

Saturday, May 4

6:00 - 10:00 am

Mammograms will be available by appointment. Please call 660-425-0274 to schedule and ask about cost.

- Blood pressure checks
- Mammograms
- Preventative Health Handouts and Screenings
- Free Skin Cancer Screening
- Free Carpal Tunnel Screening

Complete Blood Count (CBC)
Comprehensive Metabolic Panel (CMP)
Thyroid Stimulating Hormone (TSH)
Lipid Profile (Cholesterol)

\$15
Total

Hemoglobin for Diabetes (HgA1C)

\$10

Vitamin D

\$20

Prostate Specific Antigen (PSA)

\$10

*FASTING REQUIRED FOR CBC/CMP/TSH/LIPIDS.



2600 Miller Street
Bethany, MO 64424

(660) 425-2211

A Mothers Love

A Mother's love is something
that no one can explain,
It is made of deep devotion
and of sacrifice and pain,

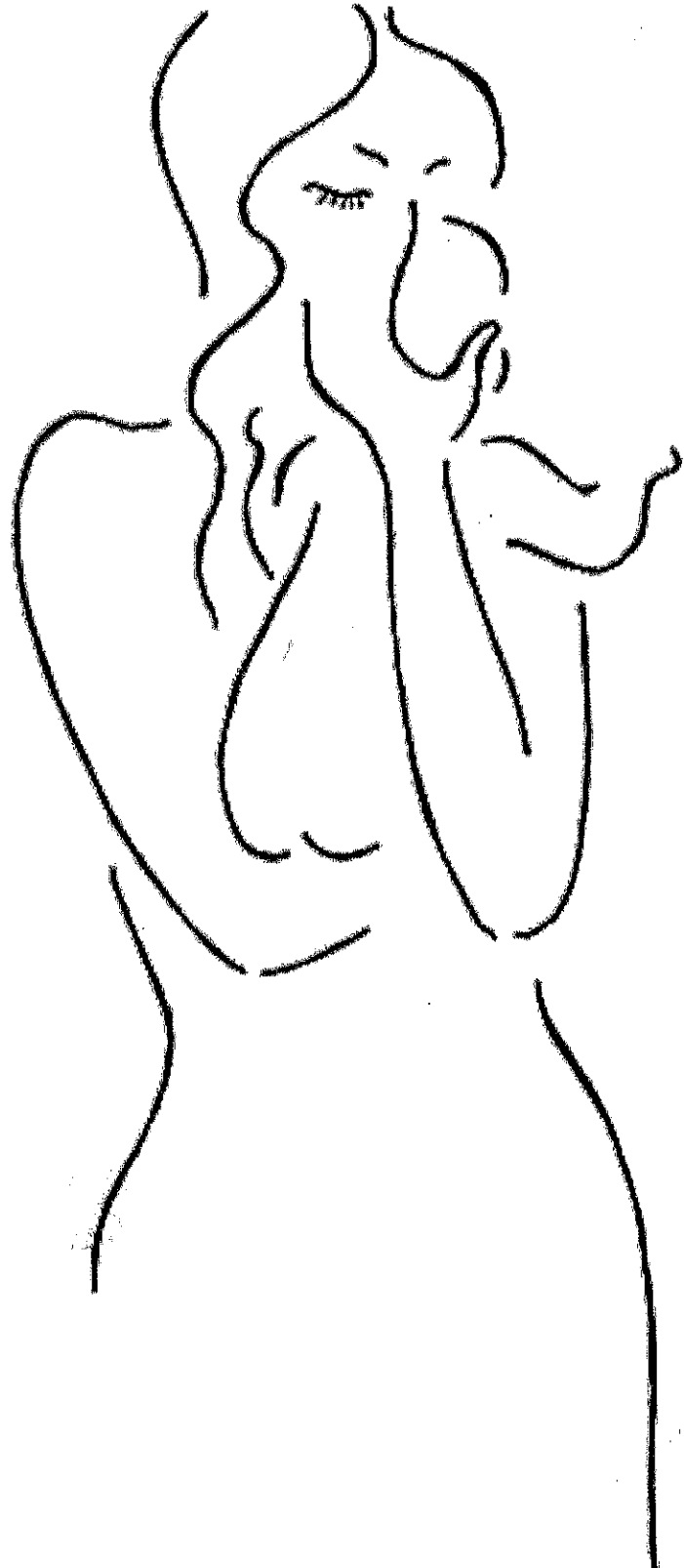
It is endless and unselfish
and enduring come what may
For nothing can destroy it
or take that love away ...

It is patient and forgiving
when all others are forsaking,
And it never fails or falters
even though the heart is breaking ...

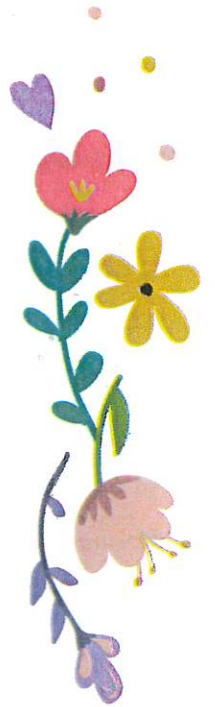
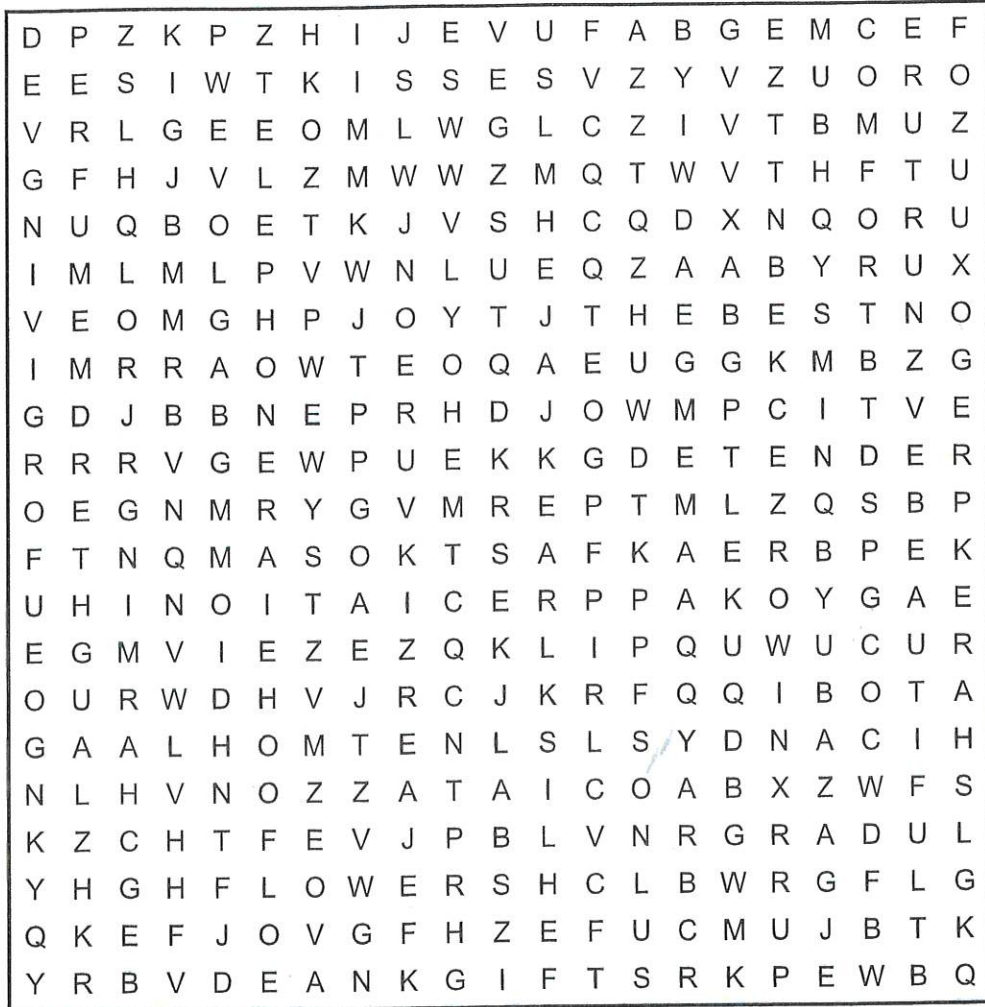
It believes beyond believing
when the world around condemns,
And it glows with all the beauty
of the rarest, brightest gems ...

It is far beyond defining,
it defies all explanation,
And it still remains a secret
like the mysteries of creation

A many splendoured miracle
man cannot understand
And another wondrous evidence
of God's tender guiding hand.



Happy Mothers Day



APPRECIATION

BEAUTIFUL

BREAKFAST

CANDY

CHARMING

COMFORT

DEVOTED

FLOWERS

FORGIVING

GIFTS

GUIDANCE

HUGS

JEWELRY

JOY

KISSES

LAUGHTER

LOVE

MATERNAL

MOM

MOTHER

NURTURE

PERFUME

PROTECTIVE

SHARE

TELEPHONE

TENDER

THE BEST

WARM

WISE

SUGAR FREE

STRAWBERRY

PRETZEL SALAD

INGREDIENTS:

- ¾ Cup butter melted (1 ½ sticks)
- 2 Cups crushed pretzels
- 3 Tablespoons Stevia In The Raw Sugar
- 8 Ounces low fat cream cheese
- ¾ Cup Stevia In The Raw Sugar
- 8 Ounces sugar free whipping topping
- 2 Cups water
- 0.6 ounces sugar free strawberry gelatin mix
- 14 ounces frozen strawberries
- 8 ounces crushed pineapple in 100% juice, drained
- Sugar free whipped topping



INSTRUCTIONS:

1. Preheat oven to 400 degrees F. Spray a 9x13 inch baking dish with nonstick spray. Set aside.
2. Mix together the melted butter, crushed pretzels, and 3 tablespoons stevia (or sugar) in a medium sized bowl. Pour the pretzel mixture into the baking dish and press down firmly to create a flat, thin layer.
2 cups crushed pretzels, ¾ cup butter
3 tablespoons stevia in the raw (bakers bag)
3. Bake the crust for 7-8 minutes, then remove from the oven and allow to fully cool.
4. Using a hand mixer or stand mixer with the paddle attachment, beat together the cream cheese and ¾ cup stevia. Stir in the whipped topping until smooth.
8 ounces low fat cream cheese, ¾ cup stevia in the raw, 8 ounces sugar free whipped topping.
5. Pour the cream cheese mixture over the pretzel crust and use a spoon or offset spatula to make a smooth layer. Place in the refrigerator to chill for 30-60 minutes.
6. Boil the water in a small saucepan. Once boiling, turn off the heat and stir in the gelatin mix. Allow to cool for 10 minutes.
2 cups water, 0.6 ounces sugar free strawberry gelatin mix.
7. Stir in the frozen strawberries and crushed pineapple.
14 ounces frozen strawberries, 8 ounces crushed pineapple in 100% juice
8. Pour the strawberry mixture over the cream cheese layer and place back in the refrigerator for 6-8 hours, or until the gelatin is fully firmed.
9. Slice and serve with a dollop of whipped cream and sliced strawberries.
Sugar free whipped topping

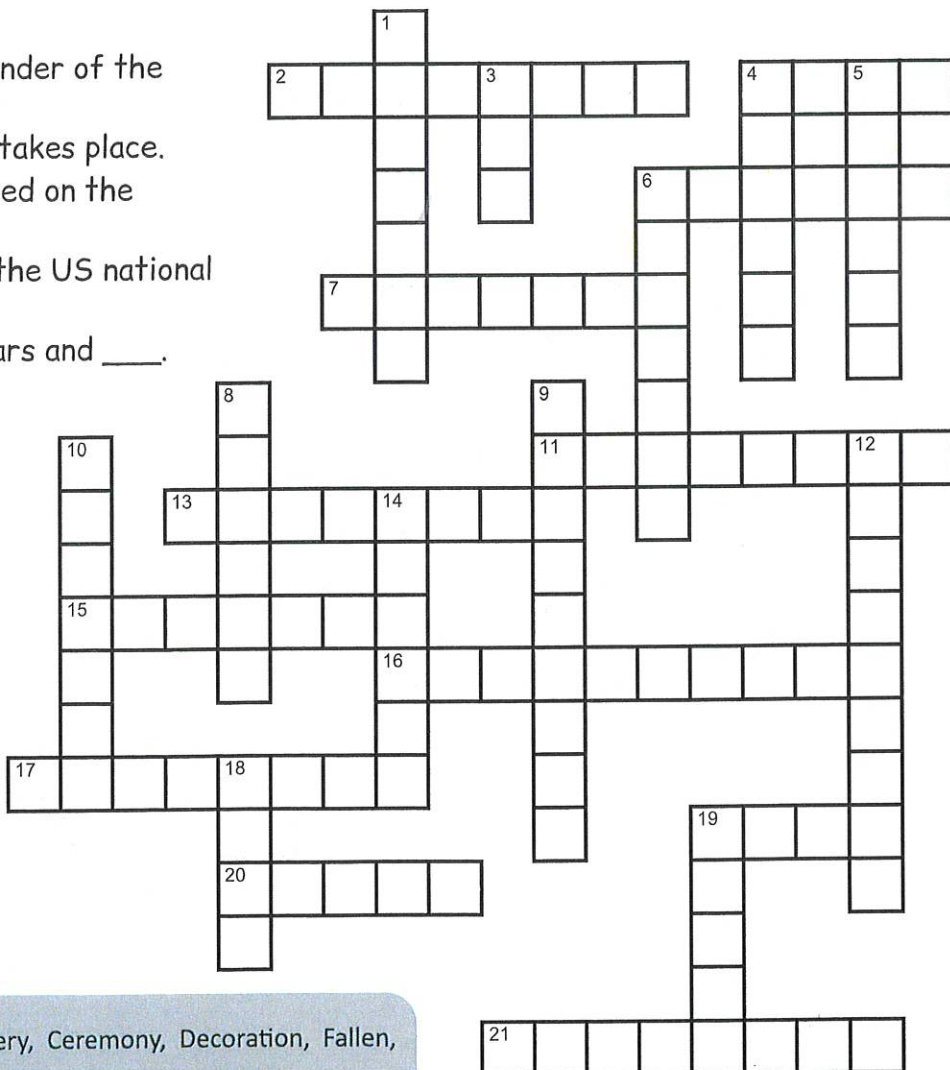
ACROSS

- 2. Ritual performed to mark a formal occasion.
- 4. The Stars and Stripes.
- 6. A 21 gun ____ might be a part of Memorial Day ceremonies.
- 7. Member of the US Army.
- 11. US Citizen.
- 13. Describes a flag's position on the pole as a symbol of mourning.
- 15. Person who formerly served in the military.
- 16. Memorial Day was originally called ____ Day.
- 17. Possible gathering place on Memorial Day.
- 19. A person idolized for their courage.
- 20. Flower symbolizing Memorial Day.
- 21. Something that is created to honor and remember people or events.



DOWN

- 1. Memorial Day serves as a reminder of the sacrifices made for our ____.
- 3. Month in which Memorial Day takes place.
- 4. Describes someone who has died on the battlefield.
- 5. The Star-Spangled Banner is the US national ____.
- 6. Nickname for the US flag: Stars and ____.
- 8. These are often decorated with small American flags on Memorial Day.
- 9. Devoted to one's country
- 10. Time spent in the armed forces.
- 12. US military cemetery located near Washington DC.
- 14. Day of the week on which Memorial Day is celebrated.
- 18. Song played on the bugle at military memorial services.
- 19. Respect paid to a person for their qualities or actions.



American, Anthem, Arlington, Cemetery, Ceremony, Decoration, Fallen, Flag, Freedom, Graves, Half Mast, Hero, Honor, May, Memorial, Monday, Patriotic, Poppy, Salute, Service, Soldier, Stripes, Taps, Veteran

Memorial Day

Crossword

SOLUTION

